

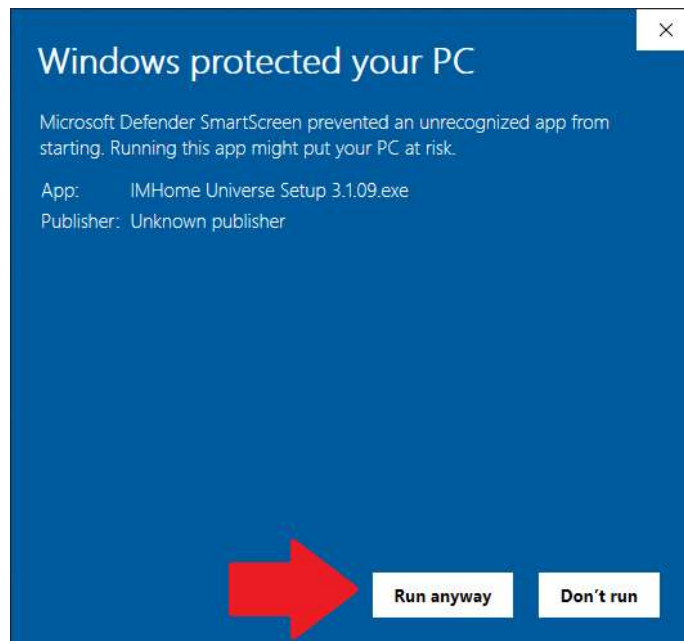
Installing IMHome Universe 3.1 on Windows 10

The following instructions are a step-by-step guide to installing IM Home Universe on a Windows 10 computer. Depending on your security settings, you may not see the first few screens. If that is the case, please skip to Step 3.

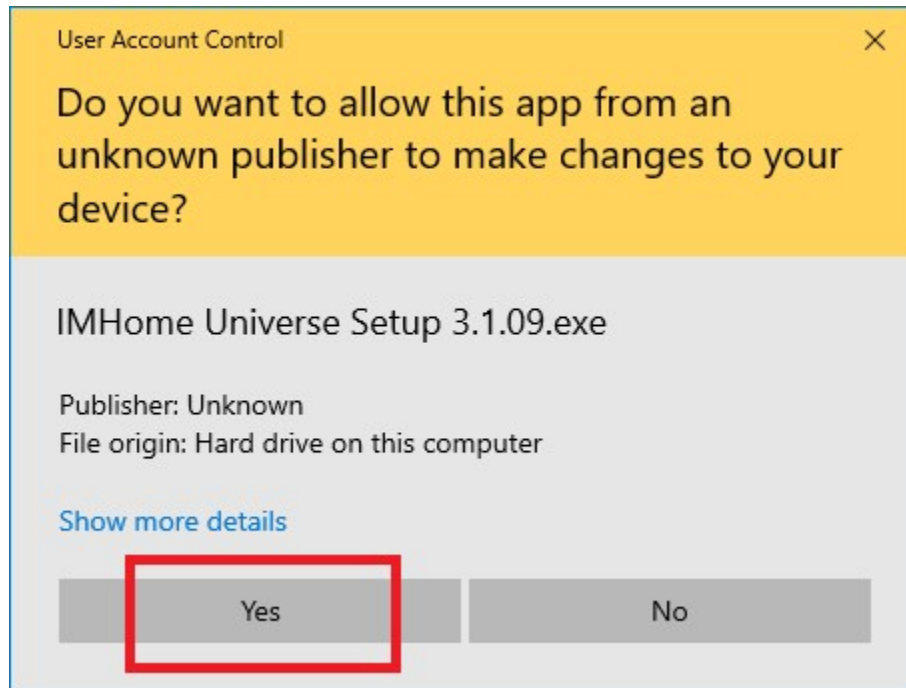
Step 1: Please select the “More info” option on the Microsoft Defender SmartScreen window.



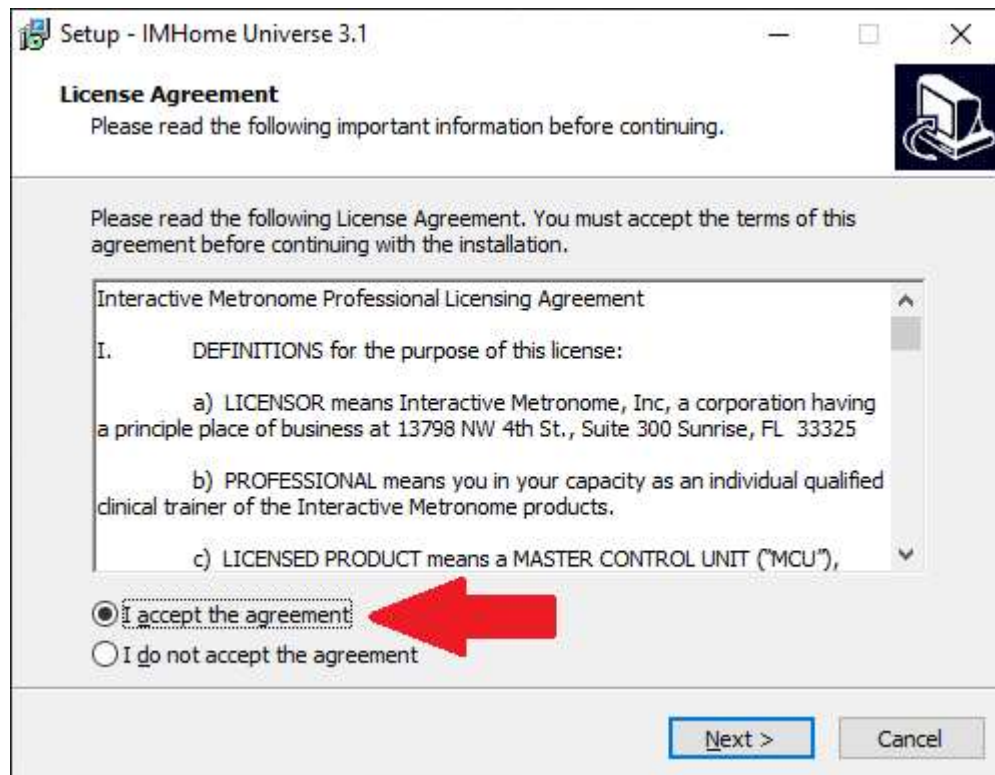
Step 2: Choose the option to “Run anyway” on the Microsoft Defender SmartScreen window.



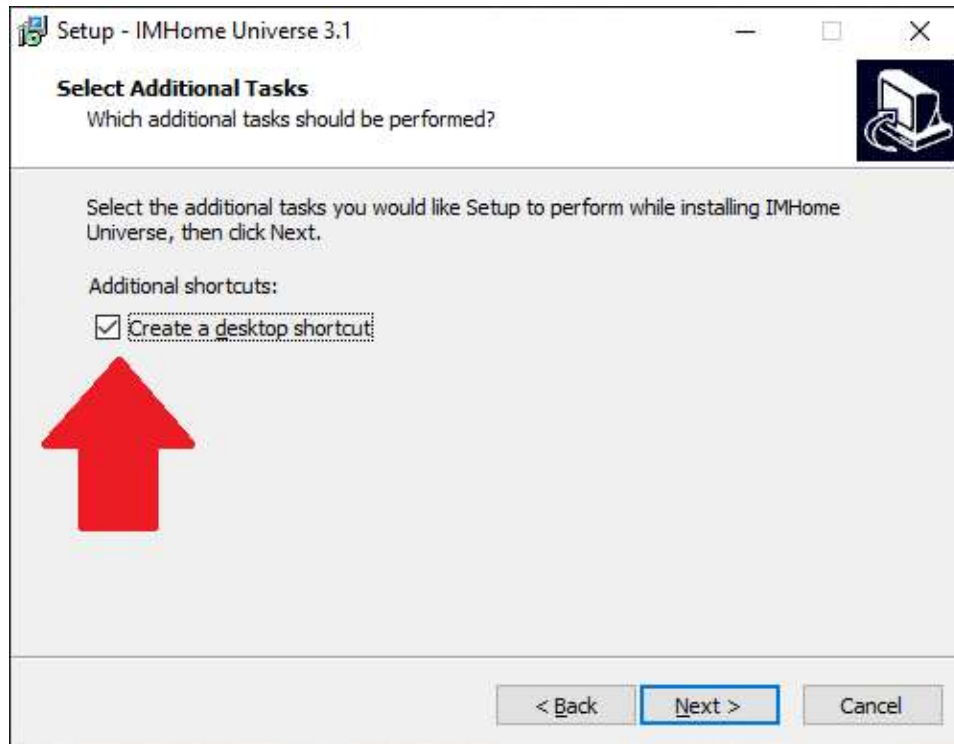
Step 3: Select “Yes” in the User Account Control window to permit the installation.



Step 4: Read and accept the Licensing Agreement and select “Next ”



Step 5: Select the “Create a desktop shortcut” option and select “Next ”



Step 6: Review all the settings and select “Install” to begin installing IM Home.

